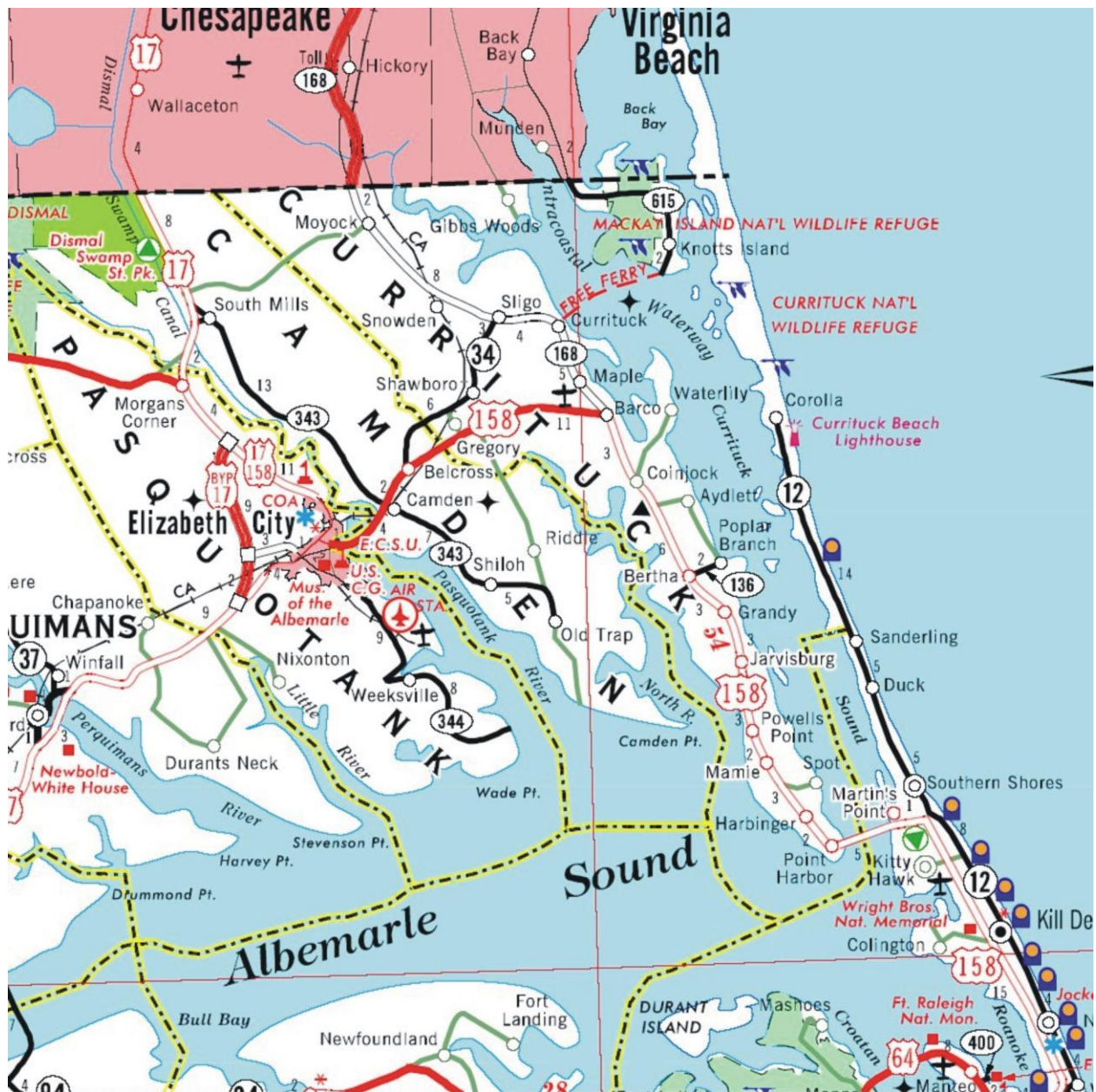


CURRITUCK COUNTY



CURRITUCK COUNTY

Contact Information for Emergency Management Director and EOC		
Contact	Address	Telephone Number
Mary Beth Newns	153 Courthouse Rd Currituck, NC 27929	(252) 232-2115 (252) 232-2750 FAX

Local Law Enforcement Agencies		
	Contact	Telephone Number
Currituck County Sheriff's Office	Sheriff Susan Johnson	(252) 453-8204

Local Hospitals for Currituck County

None

Local Shelters for Currituck County

Shelters have not yet been designated. If shelters are needed Emergency Director should be called.

NCDOT Facility Information for Currituck County		
Contact	Title	Telephone Number
Jerry Jennings	Division Engineer (Dare/Currituck)	(252) 482-1850

A-1 Fuel Needs

- Troop A, District 1 has no fuel pump at the District Office. Fuel may be obtained at one of two Department of Transportation facilities in the District. In Currituck County, fuel may be obtained at the Department of Transportation Bridge Maintenance facility located off of U.S. 158 in Harbinger.
- In an emergency situation where fuel cannot be obtained at either of the aforementioned locations, fuel may be obtained commercially, if available, by using the Voyager Card, which will be in the possession of a District Supervisor.

Currituck County Alternate Fuel Facility Locations		
Name of Station	Address	Telephone Number
7/11 – Barco	3948 Caratoke Highway Currituck, NC 27954	(252) 453-2805
7/11 – Kitty Hawk	3868 North Croatan Highway Kitty Hawk, NC 27949	(252) 261-4733

CURRITUCK COUNTY

Evacuation Routes

- US158
- NC168
- NC12

Currituck County Traffic Posts		
Post	Location	Troopers
1	US158 & NC168 – Barco	2
2	US158 & Grandy	1
3	NC168 & Sligo	1
4	NC168 & Moyock 3	1
5	NC168 & Moyock 1	1
6	NC168 & Moyock 2	1
Total Personnel Needed		7

CURRITUCK COUNTY

Post 1 – US158 & NC168 (Barco) (2 Troopers)

Traffic Lights – Assisted by local agencies, will allow traffic to flow at the evacuee's discretion. If traffic backs to the Coinjock area a 50/50 percent split in traffic flow onto US158 & NC168. If "Barco Diversion" is activated, all traffic will be directed west onto US158.

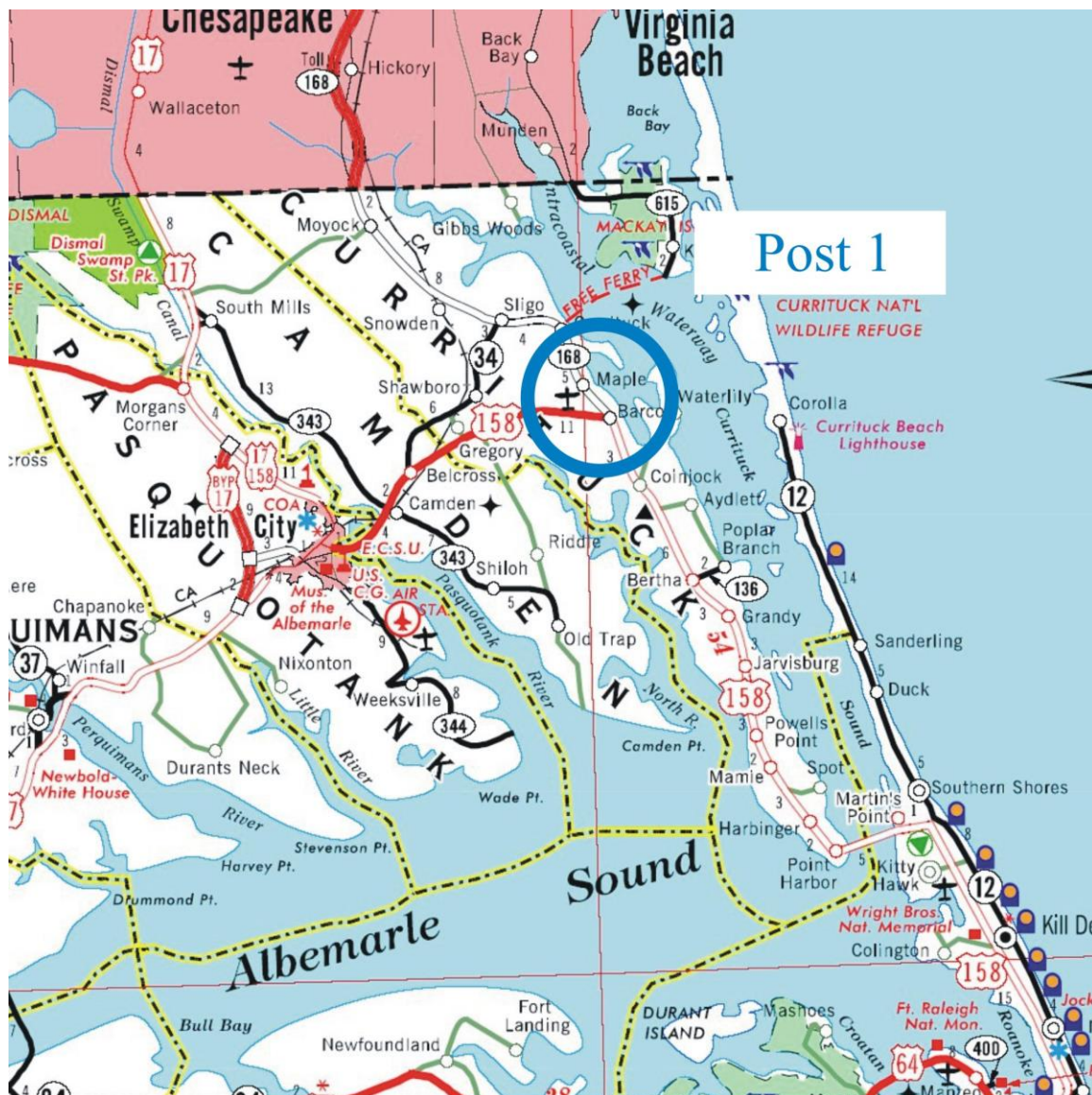
"Barco" Diversion Plan

Use if backup in Chesapeake on NC 168 Elizabeth City.

Motorists get route choice as possible.

US 158W via Elizabeth City or US 17 N.

US 17 N and VA 168 – Use I-64 ramps in Chesapeake (could be bottlenecks).



CURRITUCK COUNTY

Post 2 – US158 & Grandy (1 Trooper)

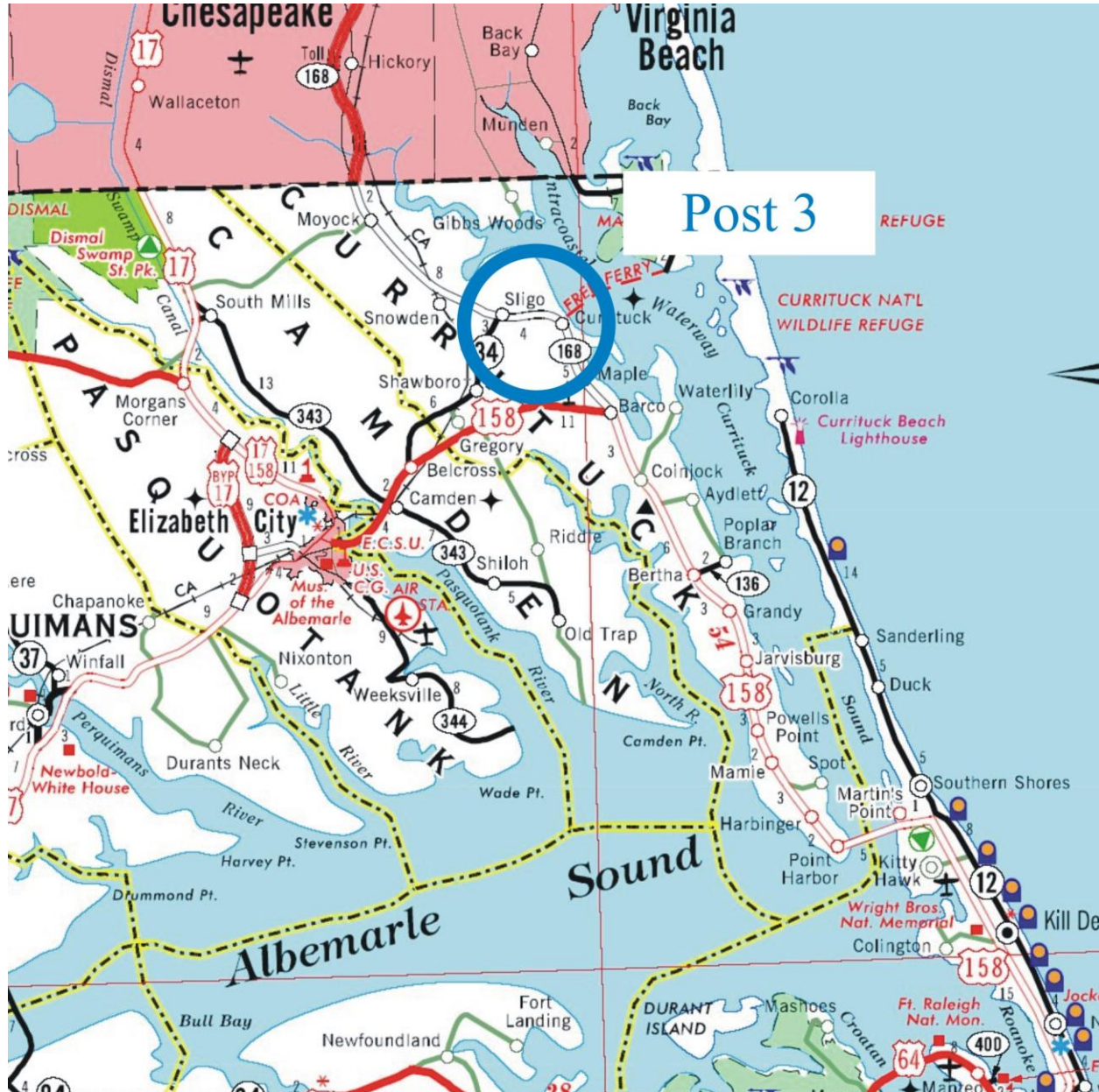
Traffic Light – Direct traffic north on NC168



CURRITUCK COUNTY

Post 3 – NC168 & Sligo (1 Trooper)

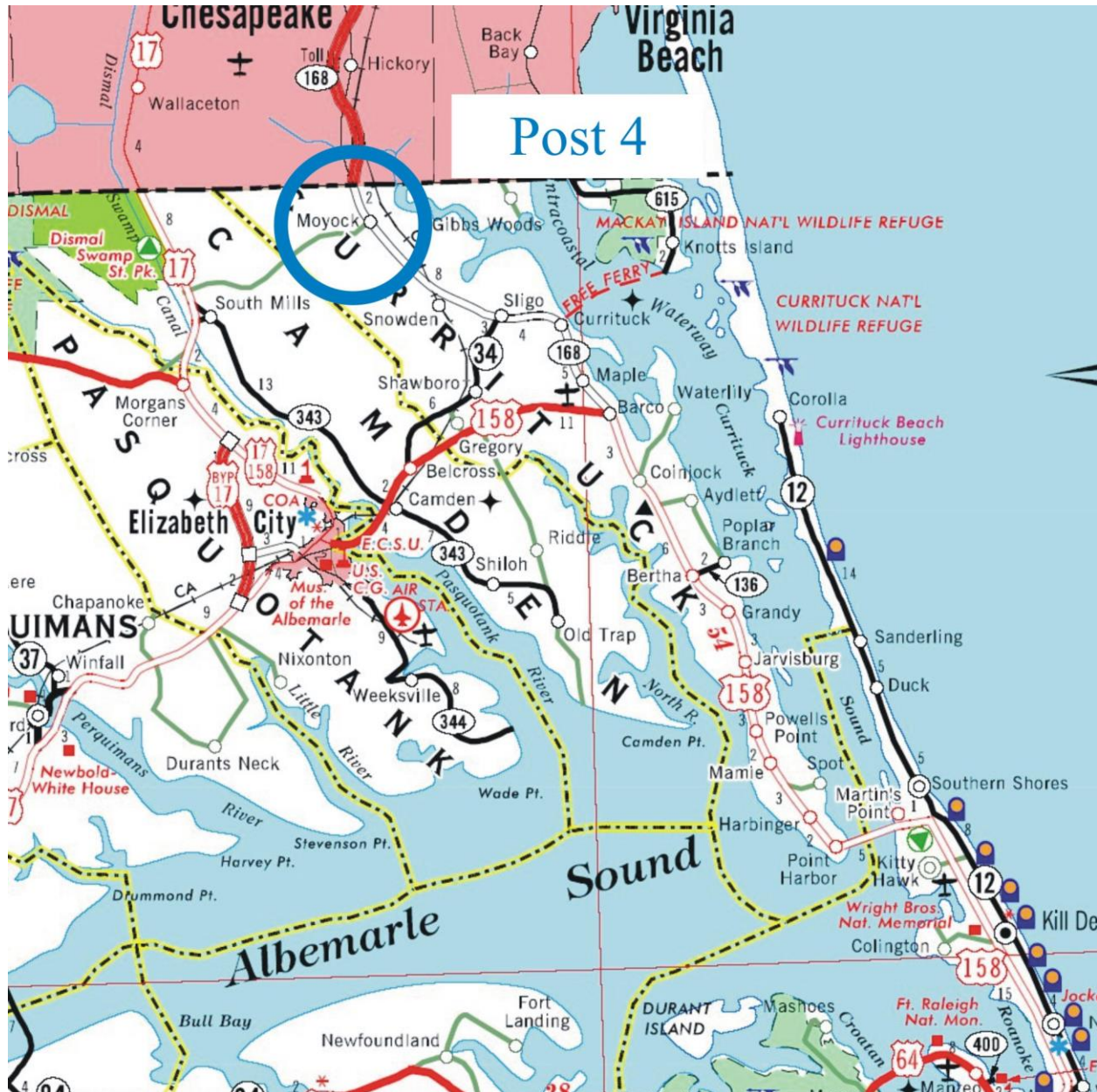
Traffic Light – Direct traffic north on NC168



CURRITUCK COUNTY

Post 4 – NC168 & Moyock 3 (1 Trooper)

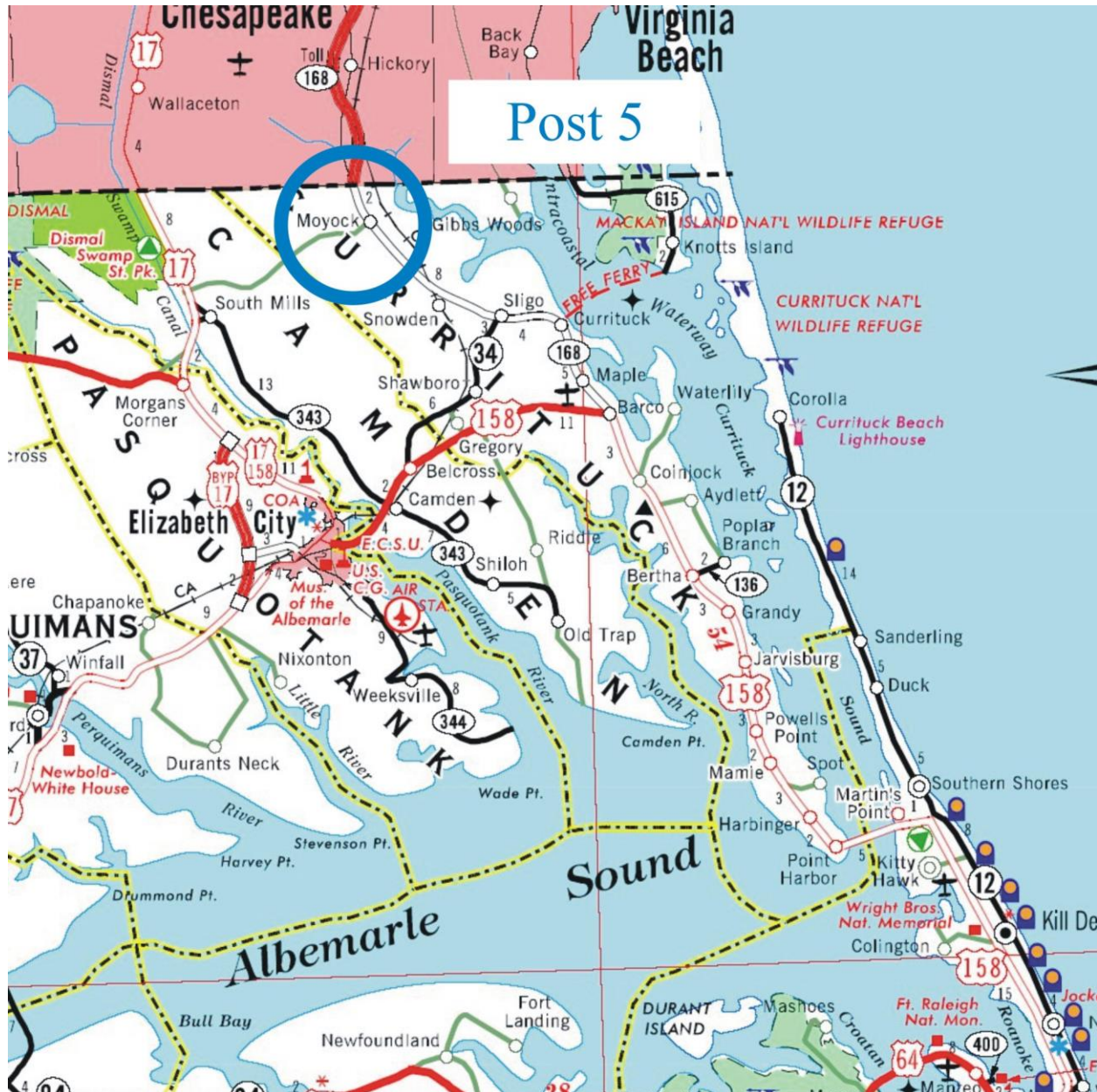
Traffic Light – Direct traffic north on NC168



CURRITUCK COUNTY

Post 5 – NC168 & Moycok 1 (1 Trooper)

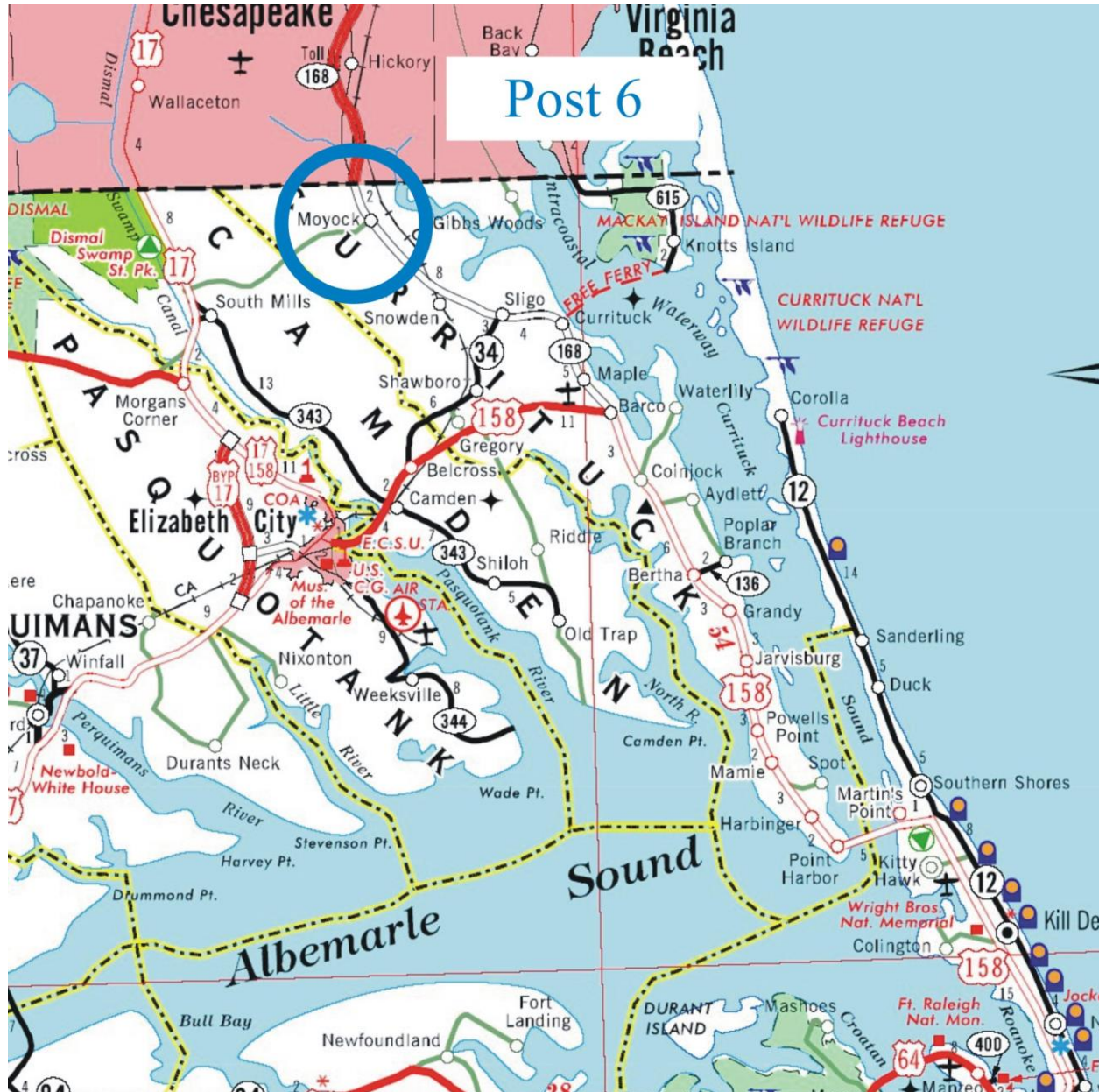
Traffic Light – Direct traffic north on NC168



CURRITUCK COUNTY

Post 6 – NC168 & Moyock 2 (1 Trooper)

Traffic Light – Direct traffic north on NC168



CURRITUCK COUNTY

Currituck County Concerns and Challenges

- NC12 evacuation from Corolla is two lanes and has a history of congestion
- Co-ordination with Virginia authorities is vital to ensure constant traffic flow northbound on NC168
- Implementation of the “Barco Diversion”
- Volume of traffic lights in the event of a power outage
- Western US158 is a two lane route
- Flooding in low-lying areas
- If the Wright Memorial Bridge becomes impassable
- Communication issues

Currituck County Lodging Locations

- Roanoke Island Festival Park Housing in Manteo
- Any Trooper working the Currituck County posts may have to be housed in Elizabeth City or travel back to their duty stations.