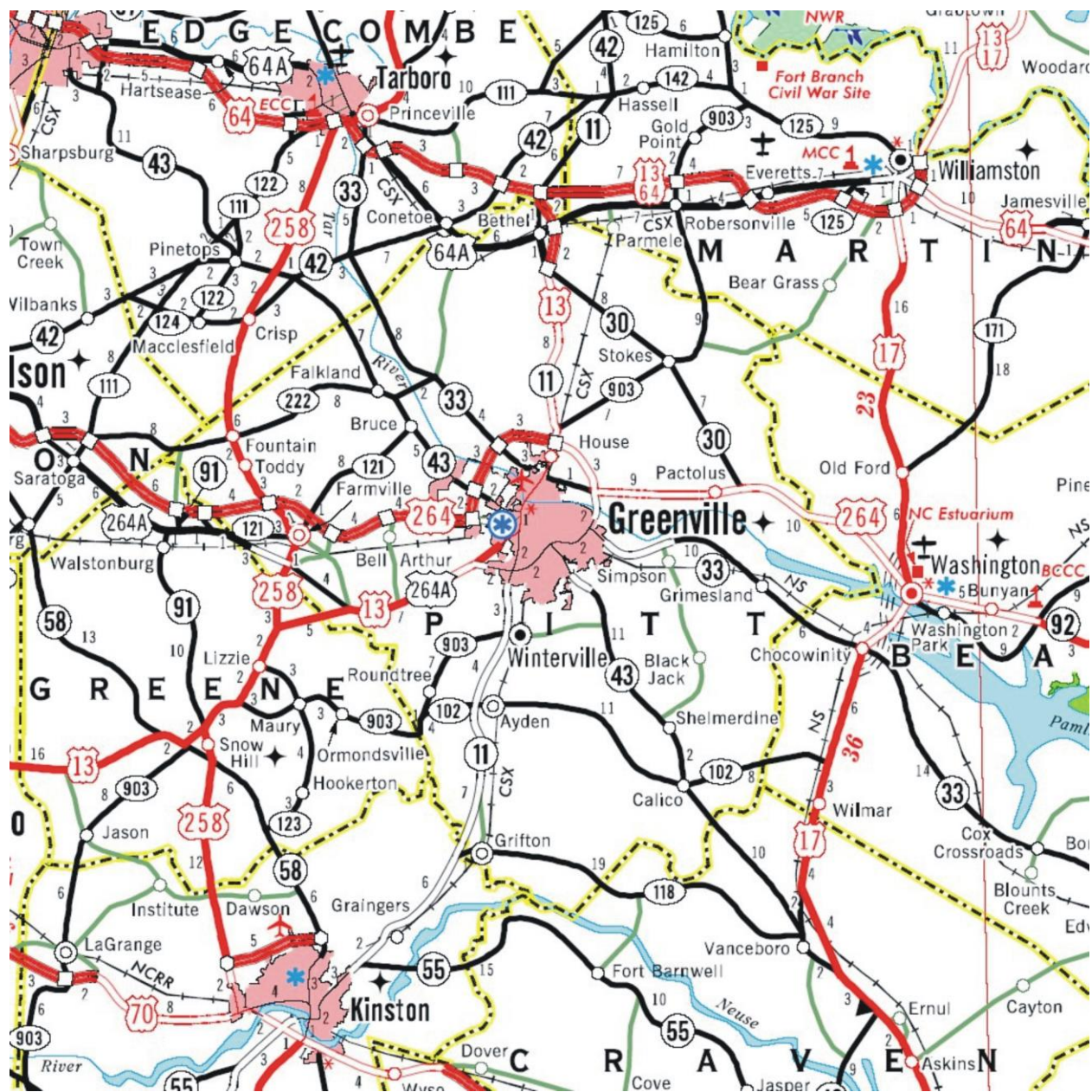


PITT COUNTY



PITT COUNTY

Contact Information for Emergency Management Director and EOC

Contact	Address	Telephone Number
Noel Lee	1717 West 5th St., Greenville, NC 27834	(252) 902-3952

Local Law Enforcement Agencies

	Contact	Telephone Number
Pitt County Sheriff's Office	Sheriff Neil Elks	(252) 902-2990
Greenville Police Department	Interim Chief Ted Sauls	(252) 329-4332
Ayden Police Department	Chief Barry Stanley	(252) 746-7015
Bethel Police Department	Chief Troy Strickland	(252) 825-5481
Farmville Police Department	Chief Donnie Green	(252) 753-4111
Fountain Police Department	Chief Bobby Dildy	(252) 749-2881
Grifton Police Department	Chief Bryan Cauley	(252) 524-4161
Winterville Police Department	Chief Ryan Willhite	(252) 756-1105
East Carolina University Public Safety	Chief Gerald Lewis	(252) 328-6787

Local Hospitals for Pitt County

	Contact	Telephone Number
Vident Medical Center	Dr. Juan March	(252) 847-5299

Local Shelters for Pitt County

- Shelters have not yet been designated. If shelters are needed Emergency Director should be called.

NCDOT Facility Information for Pitt County

	Contact	Telephone Number
Jeff Cabaniss	County Engineer	(252) 830-3142

A-5 Fuel Needs

- Fuel may be obtained at the Troop A District 5 Office.
- In the event power is lost at the District Office, fuel may be obtained at the following locations for each county: Pitt – Department of Transportation Facility on NC 11, Greenville on Memorial Drive, south of the Pitt County Airport.
- In an emergency situation where fuel cannot be obtained at either of the aforementioned locations, fuel may be obtained commercially by using the Voyager Fleet Card, which will be in the possession of a District Supervisor.

PITT COUNTY

Pitt County Alternate Fuel Facility Locations		
Name of Station	Address	Telephone Number
Kangaroo #3104	1301 West Arlington Blvd. Greenville, NC	(252) 321-0364
Kangaroo #3083	700 South Memorial Drive Greenville, NC	(252) 830-6825

Evacuation Routes

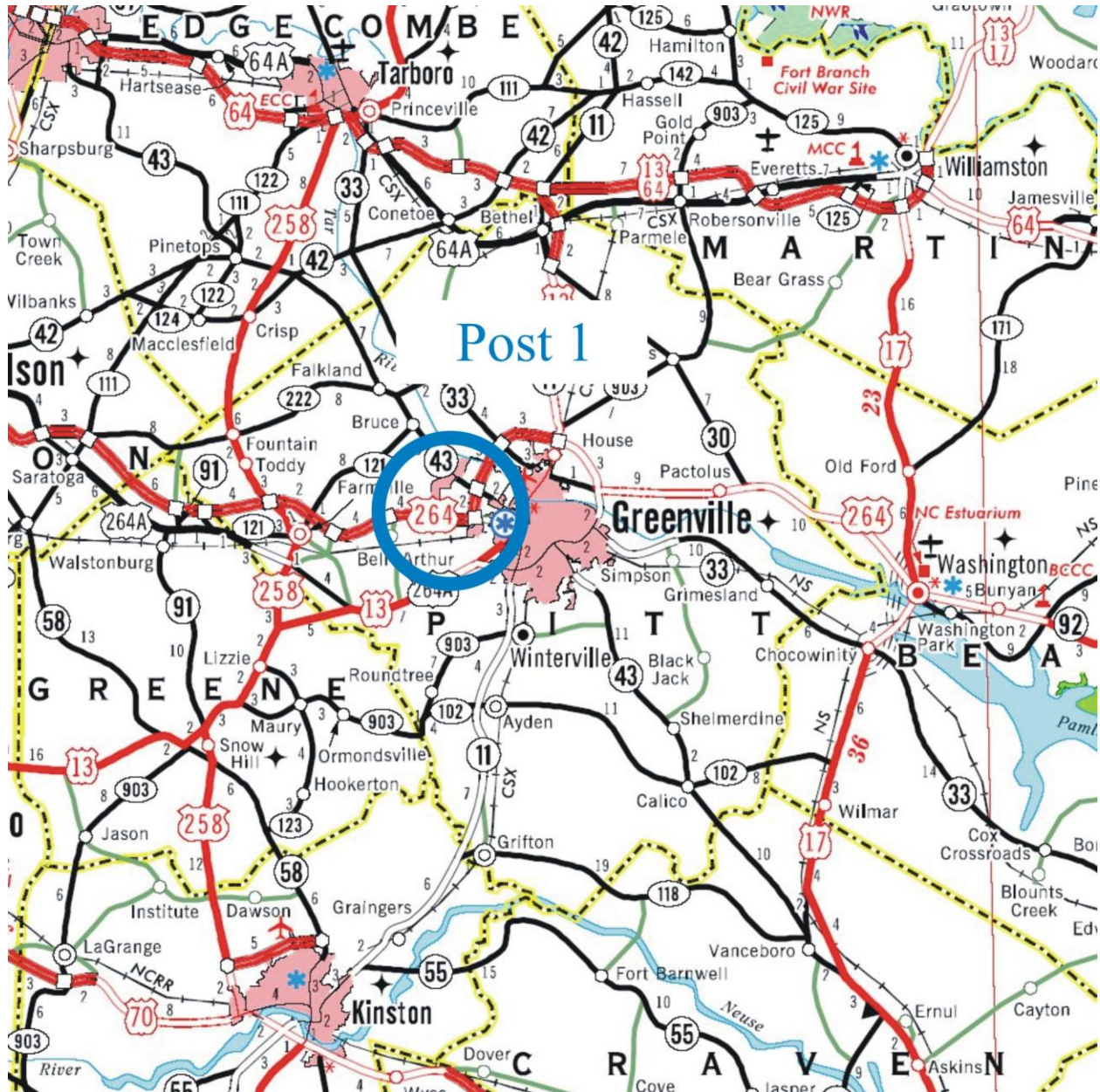
- US264

Pitt County Traffic Posts		
Post	Location	Troopers
1	US264 By-Pass & US264 Business – Greenville	1
2	US264 By-Pass & US264 West – Greenville	4
Total Personnel Needed		5

PITT COUNTY

Post 1 – US264 By-Pass & US264 Business – Greenville (1 Troopers)

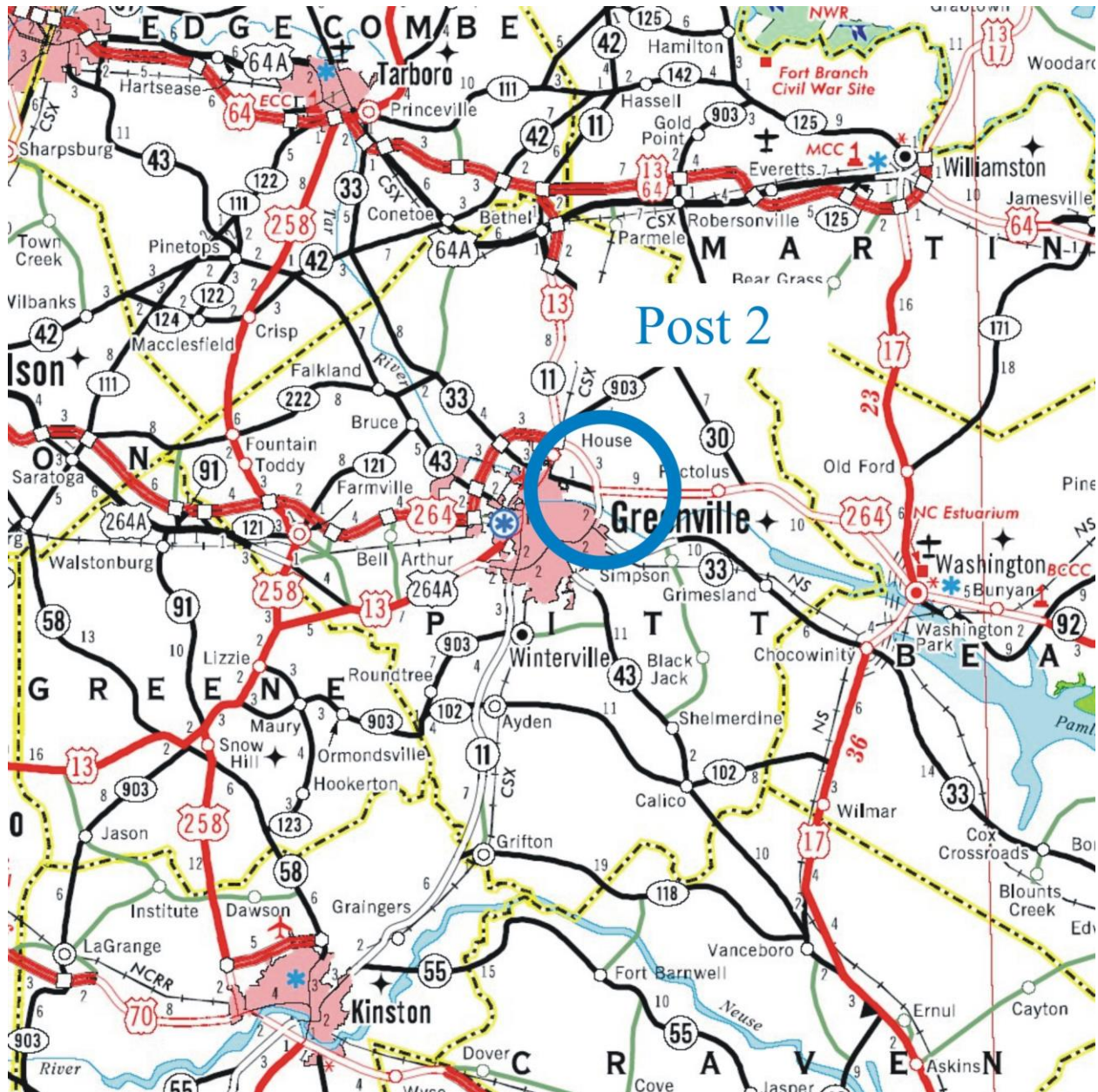
Traffic Lights – Direct traffic west to US264



PITT COUNTY

Post 2 – US264 By-Pass & US264 West – Greenville (4 Trooper)

Two lanes with one merge onto US264 West. Assigned member will monitor. DOT resources will be utilized.



PITT COUNTY

Pitt County Concerns and Challenges

- Traffic flow from US264 By-pass onto US264 west from the merge lane
- Flooding in the area of Greenville on US264