

Y^ou^asⁱⁱ™

Youth Assessment & Screening Instrument

Juvenile Jurisdiction Advisory Committee – YASI PRESENTATION



Orbis Partners – Who are we?

- Founded in 2000
- Parent Company - MST Services (2019 acquisition)
- Focus: Assessment, Interventions, Research
- YASI- 12 statewide implementations (and growing)
- MAYSI-2 (Massachusetts Youth Screening Instrument)
- Specialized programming for Girls and Women



State Wide Implementations of YASI

New York Juvenile Probation
Illinois DHS
Vermont
Virginia (Probation/Detention)
North Dakota
Alberta, Canada (Probation and Custody)
California DJJ
Illinois DJJ
Hawaii (Probation and Custody)
Wisconsin (Department of Children and Families)
Colorado DYS – (Youth Custody)
North Carolina Department of Public Safety

Michigan (10 counties)
Many large city counties (e.g., Atlanta, Memphis, Detroit)
Scotland (residential)
Many large and small service providers (e.g., John Howard, Eckerd, AMI, Girls and Boys Clubs)



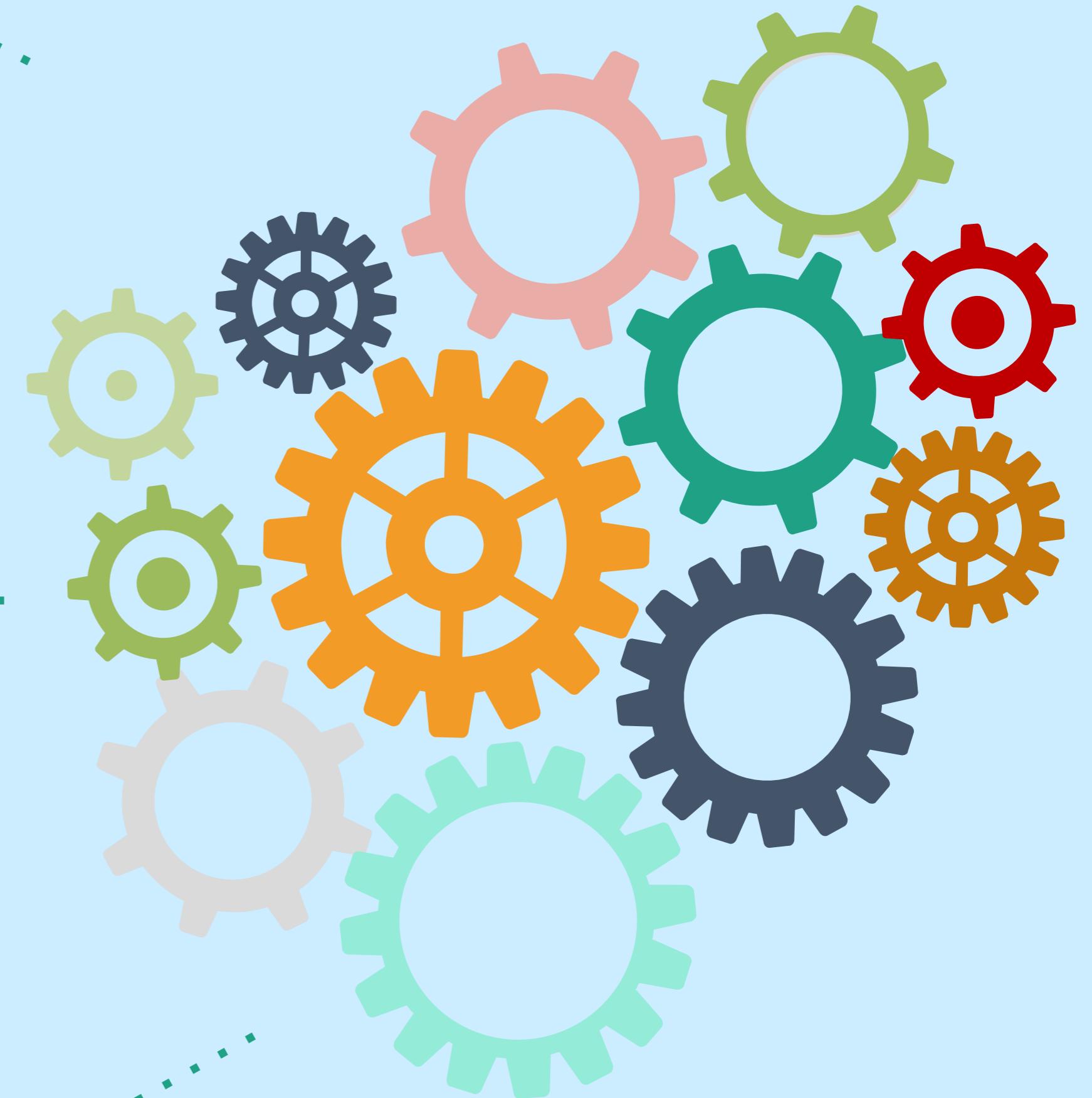
Other clients:

YASI

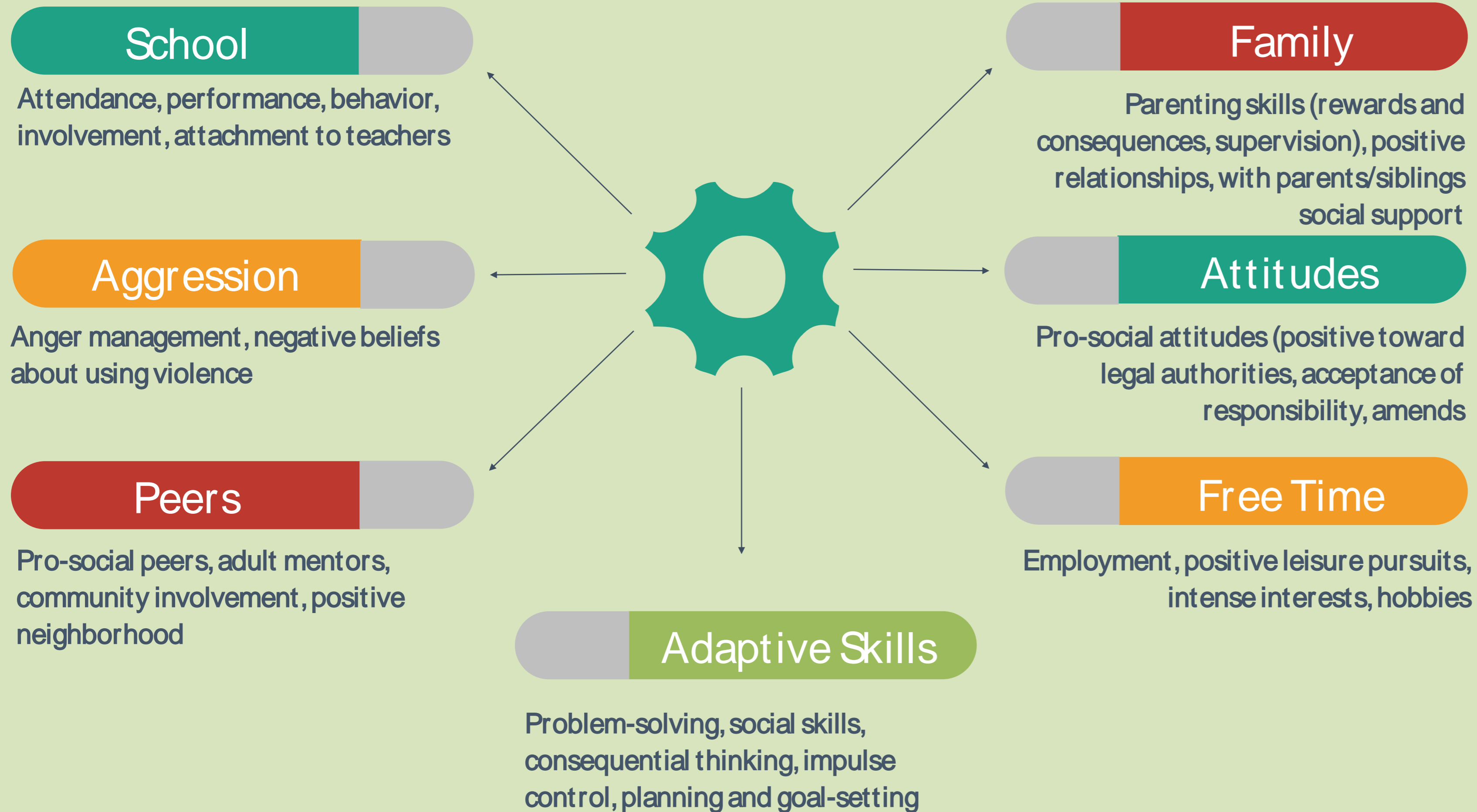
An innovative risk, needs and strengths assessment for justice involved youth.

Purpose:

- Measuring risk of recidivism
- Developing case plans



YASI Domains



Customizations for North Carolina

- NC Legal Language
- 2 New Domains
 - **Basic Needs** (food, housing, material needs)
 - **Physical Health** (conditions, access to health care, medication, dental, vision, reproductive health)



YASI FEATURES

Strengths



**Risk/ Need/ Responsivity
Motivational Interviewing**



**Gender
Responsive**



Case Planning



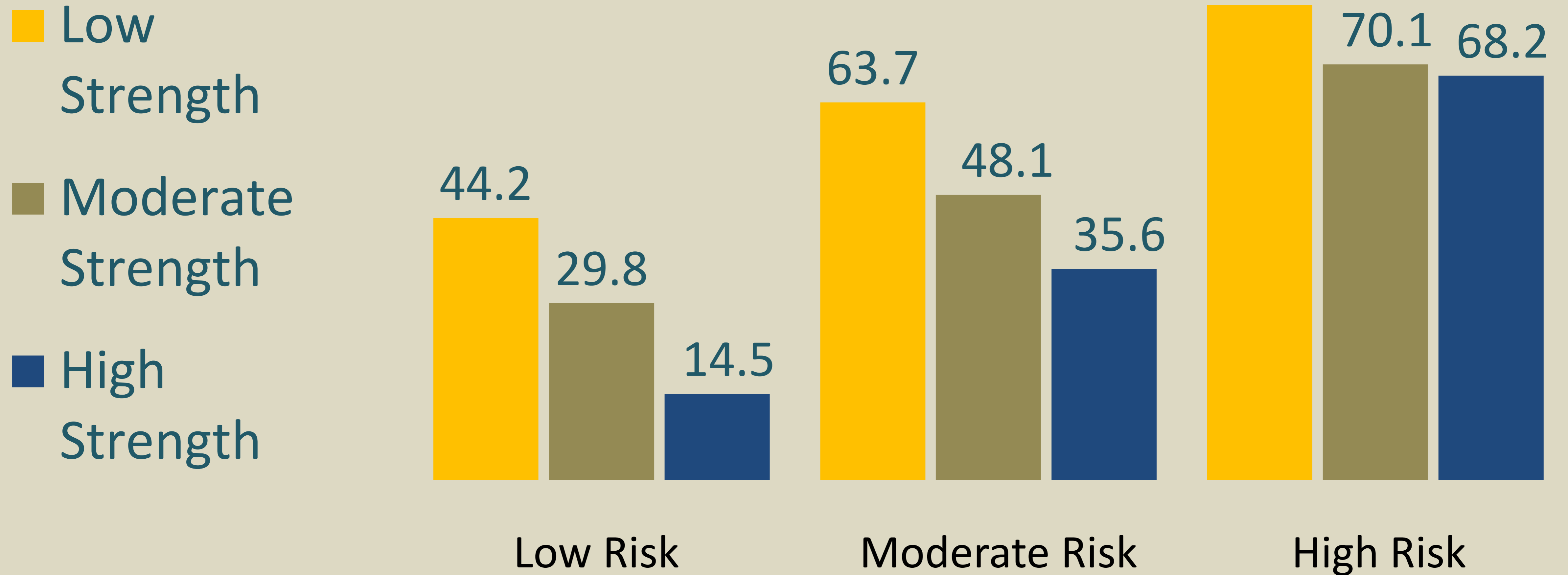
**Trauma /
Adverse
Childhood
Experience**



**Measuring Change
Reassessments**



% Recidivism by Risk and Strength (n=2,712)



Gender Responsive



- YASI “*cut-off*” scores are different for girls and boys (to correct for the tendency for risk assessments to overclassify girls)
- Ongoing research focuses on developing improved scoring models for girls and boys

Trauma / Adverse Childhood Experience

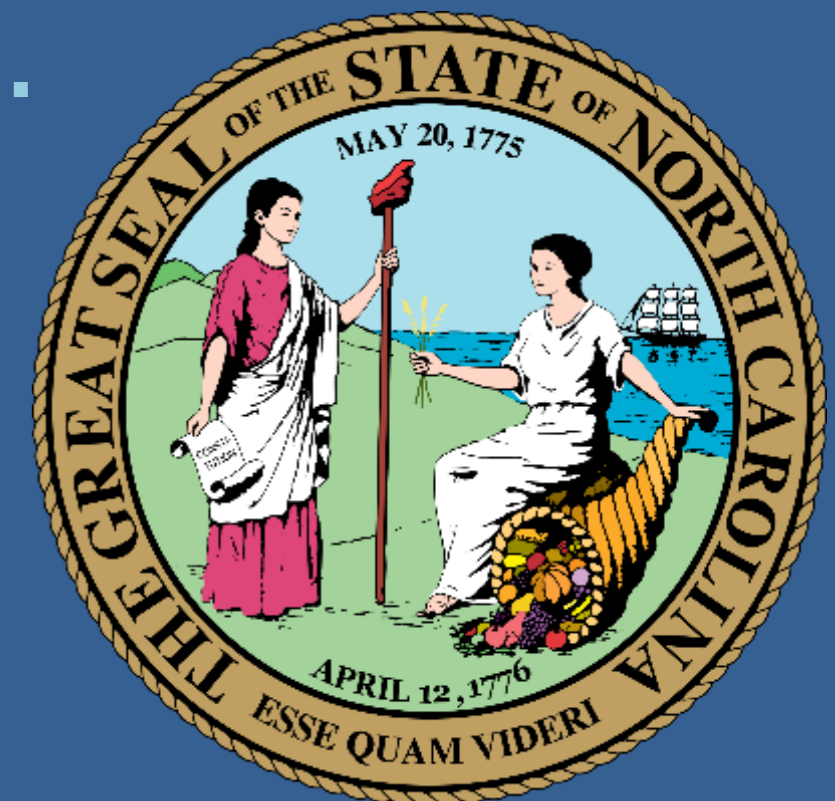
YASI includes sufficient item content for calculating an index of Adverse Childhood Experience (ACE)

YASI measures the experience of current and past mental health issues



NC Legal Requirements Met

- Juvenile Justice has reviewed with legal counsel.
- No statutory barriers to Juvenile Justice using the YASI tool.
- Specific requirements that must be in the risk and needs assessment is information regarding the juvenile's social, medical, psychiatric, psychological, and educational history and factors indicating the probability of the juvenile committing additional delinquent act.
- YASI assessment tool covers these areas.





Youth Assessment & Screening Instrument

- **PRE-SCREEN** – 34 items
- Purpose: Classification
- Administration Time: 20 – 30 Minutes

- **FULL ASSESSMENT** – 105 items (total includes Pre-Screen questions)
- Purpose: Case Planning
- Administration Time - Additional: 25 – 40 Minutes

TOOL ADMINISTRATION

FILE REVIEW

- Legal History
- Court Documents
- Police Reports
- Collateral Sources

SEMI-STRUCTURED INTERVIEW

- Behavior Analysis
- Motivational Interviewing Methods (OARS)
 - Open-ended Questions
 - Affirmations
 - Reflections
 - Summarization

YASI Wheel



Pre-Screen Risk



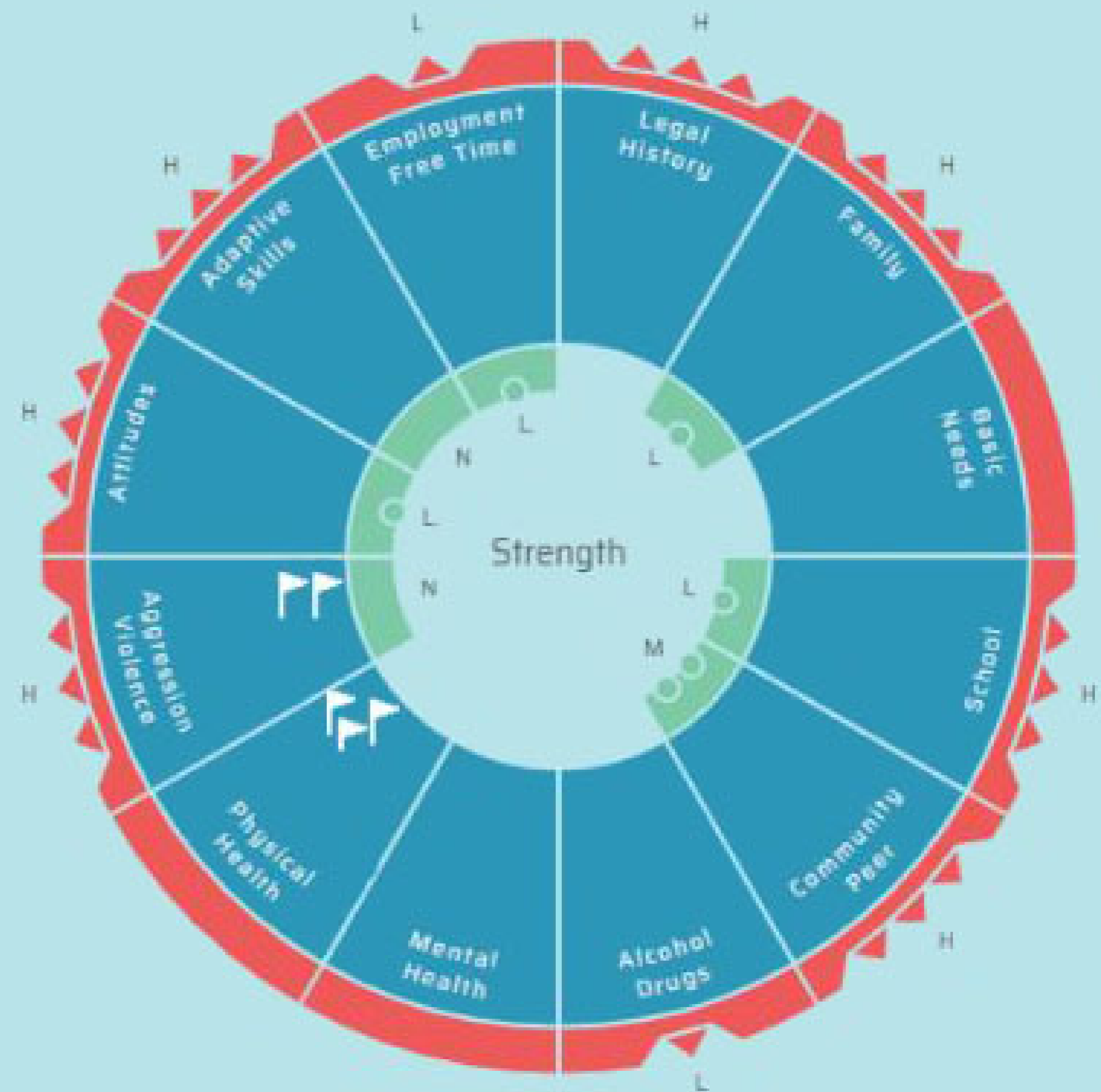
Static Risk



Need - 6 Levels



Strength - 6 Levels



COLLABORATIVE CASE WORK:

3 STEPS



1. MAPPING – DISCOVERY

- Assessment with YASI, Results, Early Planning

2. PLANNING – MOTIVATION

- Working collaboratively with the youth to build a case plan through Feedback, Goal Setting and Action Steps

3. REVIEWING

- Reassessment, Monitoring Progress, Supporting Change, Amending Case Plans

Feedback Process



What needs to Change?

Point to the behavior that brought the youth into the justice system (offenses, problems, behaviors)



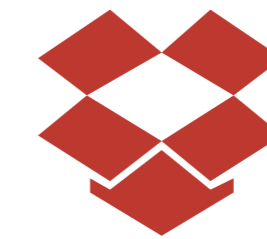
Strengths

List the strengths identified through the YASI Assessment



Challenges

List the 3 Priority Domains identified by the assessment process



Incentives

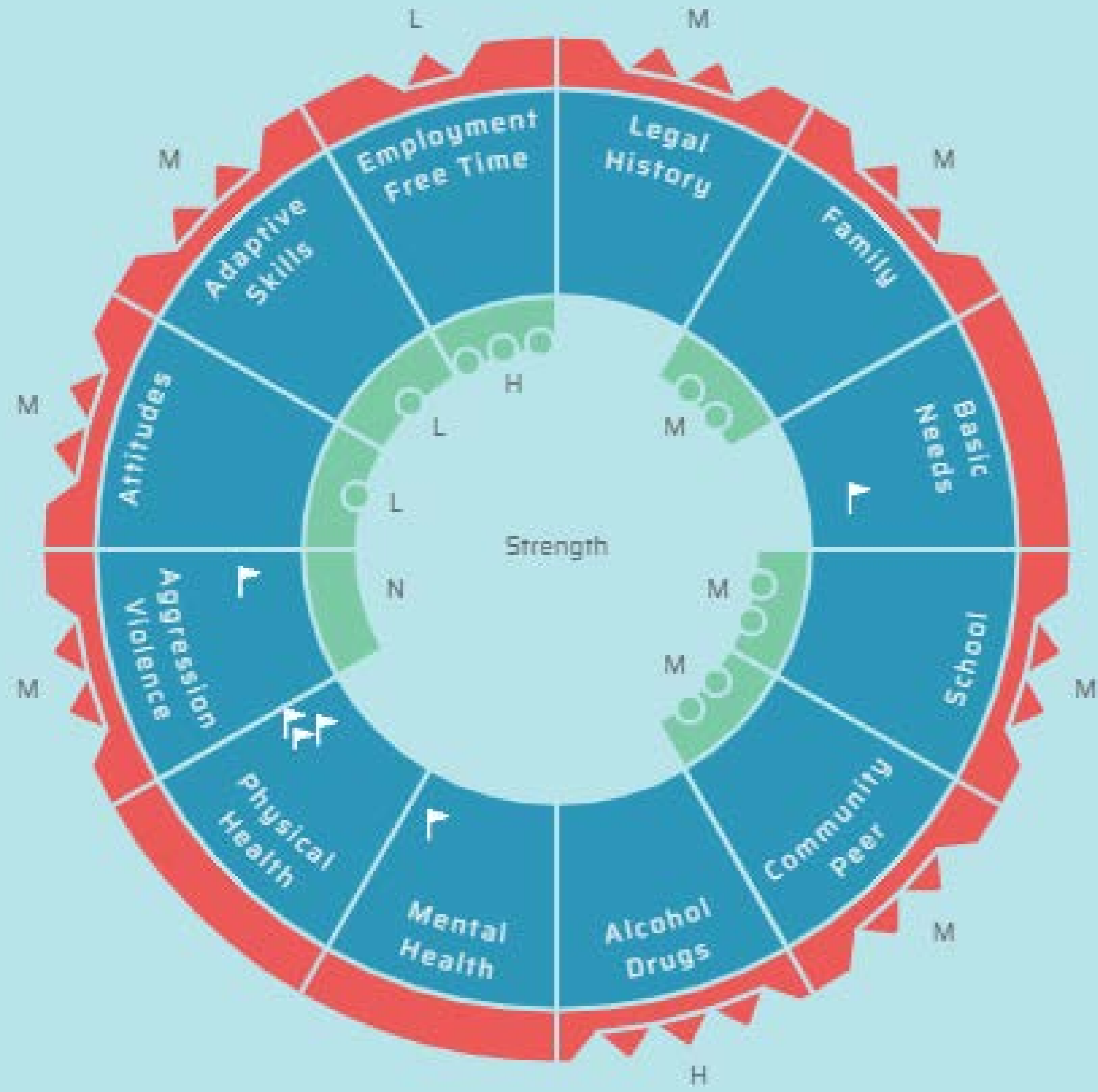
Remind the youth about the incentives they identified to change (e.g., DARN-C)



Where do you want to start?

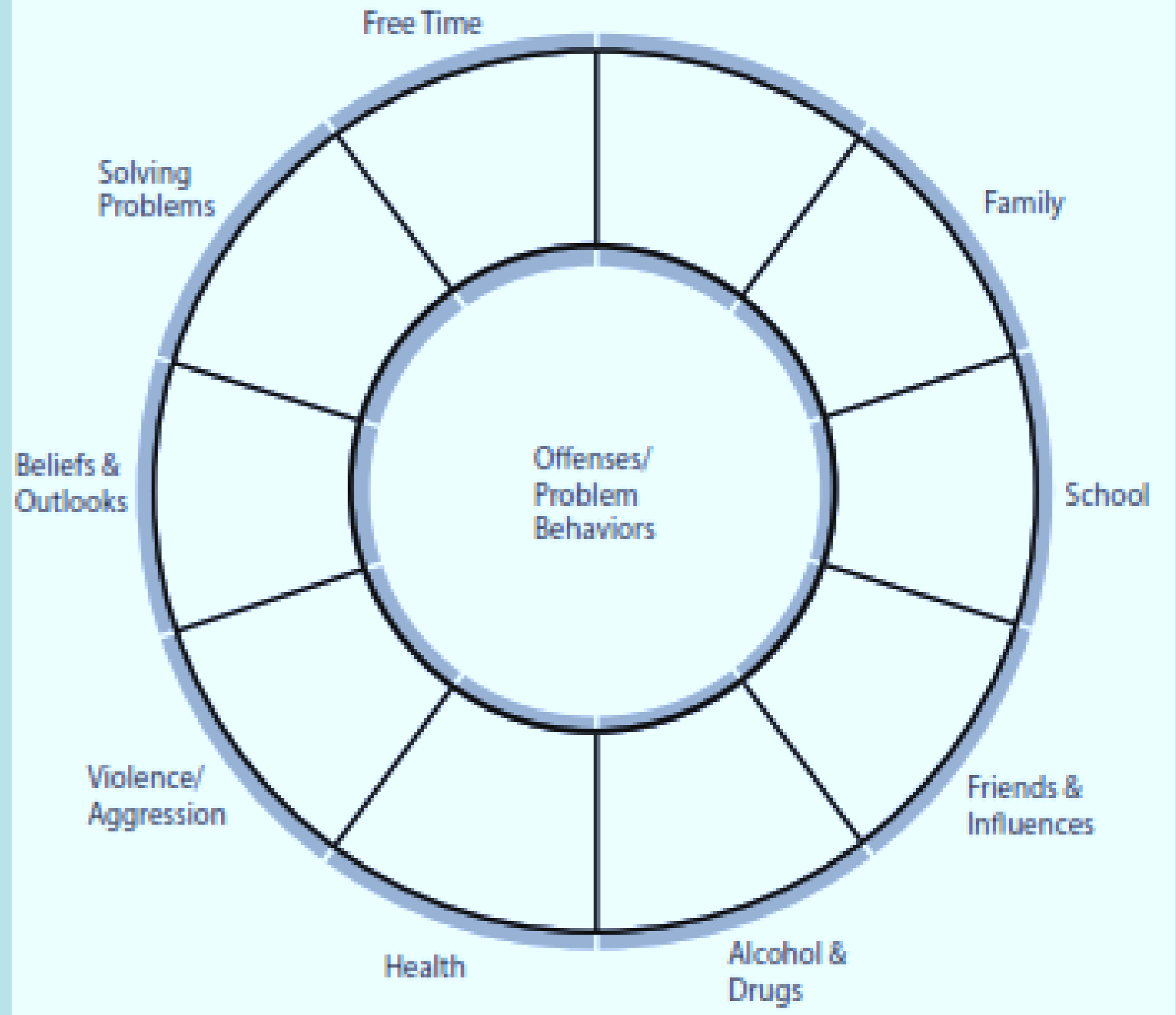
Where do they want to start to make change?

“ Use the Feedback Wheel...
Pencil in each step ”



YASI Wheel

Incentives:



YASI Feedback Wheel

Features of CaseWorks Software

Entry of Assessment Information

**Graphic Profile of Assessment Results
(YASI Wheel)**

Narrative Report

Statistical Reports

Case Planning Module

- Case Analysis, Priorities, Goals, Action Steps



Pre-Screen

- Legal History
- Family
- School
- Community / Peer
- Alcohol / Drug
- Mental Health
- Aggression / Violence
- Attitudes
- Adaptive Skills
- Employment / Free Time



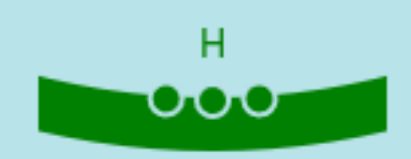
Overall Pre-Screen Risk



Legal History



Social History



Pre-Screen Strength

Areas Contributing to Risk

- Legal History
- Alcohol / Drugs
- School
- Mental Health
- Attitudes

Areas with No Risk

- Family
- Community / Peer
- Aggression / Violence
- Adaptive Skills
- Employment / Free Time



Pre-Screen Risk



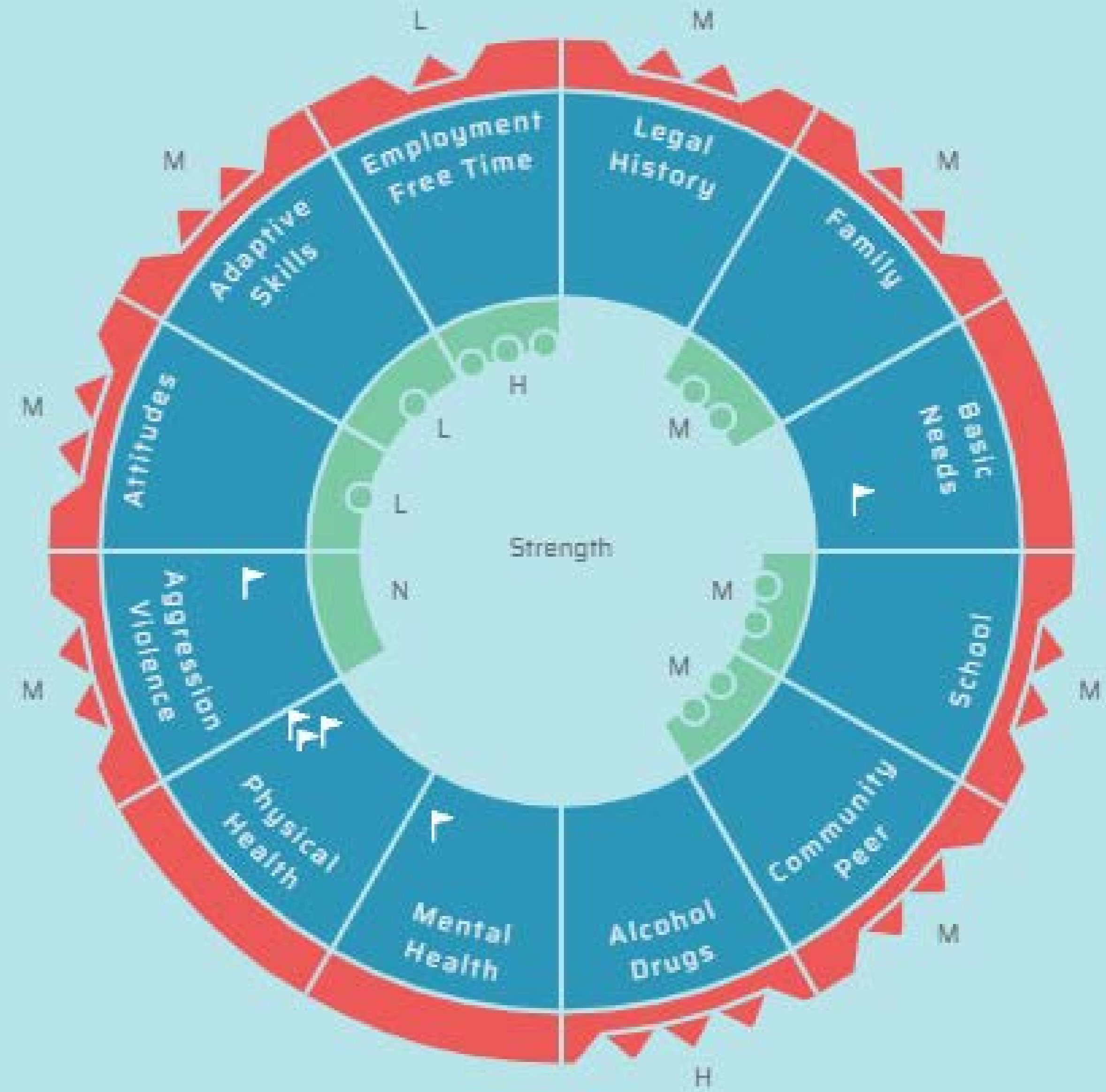
Static Risk



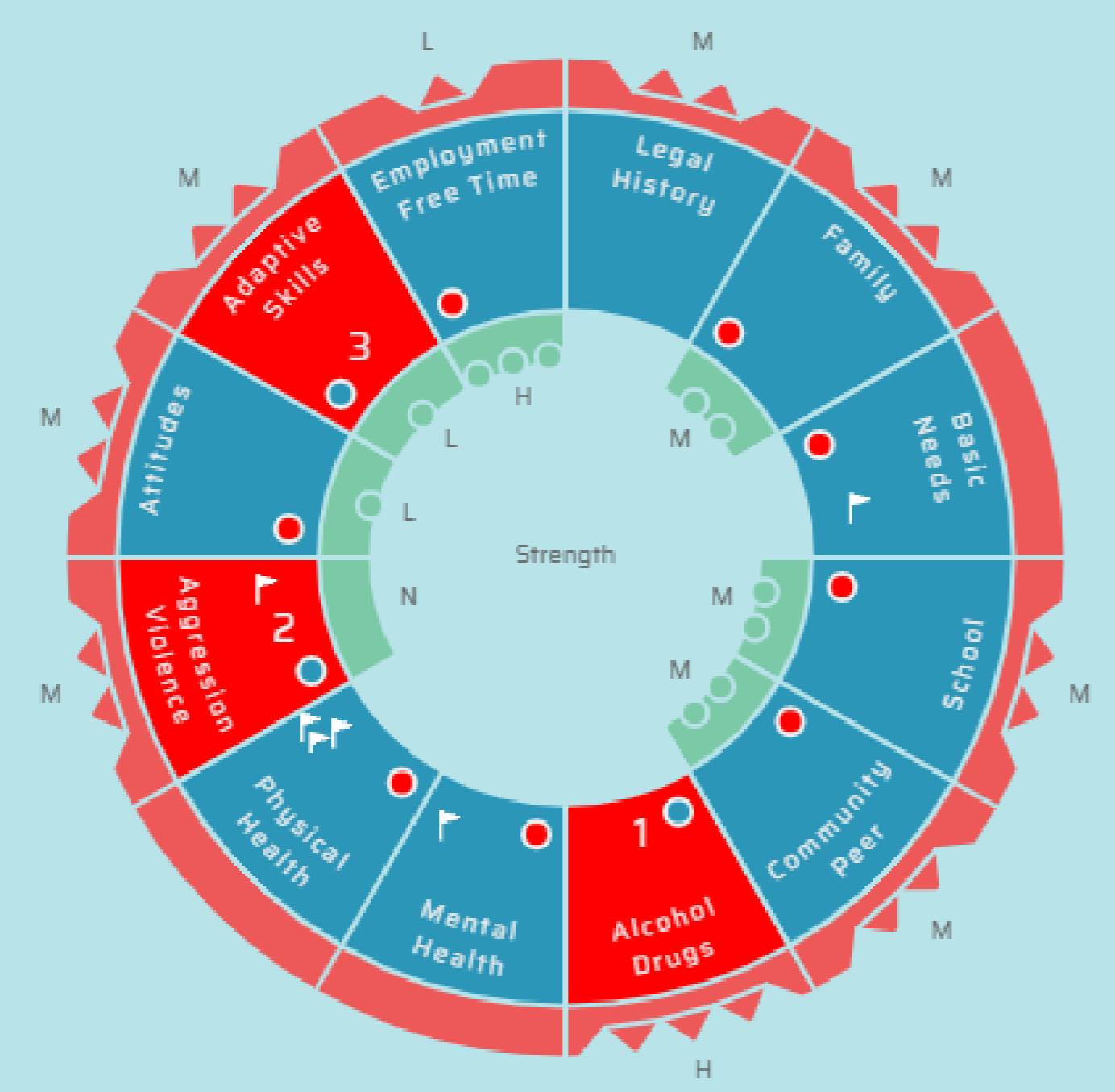
Need - 6 Levels



Strength - 6 Levels



- Legal History
- Family
- Basic Needs
- School
- Community / Peer
- Alcohol / Drugs
- Mental Health
- Physical Health
- Aggression / Violence



Domain: Adaptive Skills

Risk / Need Factors (potential targets)

- Believes that most problem behavior is not controllable
- Has some difficulty in expressing needs to others in a constructive way
- Cannot identify triggers to problems
- Lacks skills and motivation for developing realistic plans
- Can identify specific consequences but does not always act accordingly
- Can sometimes identify problem behaviors without generating appropriate solutions

Strengths

Tries to understand other points of view

Implementation Plan

- Ongoing CaseWorks software Development, NC Join Integration, and YASI Customization
- June - Orientation for Leadership and Managers
- July - Release of Assessment Software with NC Join Integration
- July – Dec – Training JJ staff
- January 1st 2021 – Official Implementation

Training Plan with COVID-19 Restrictions

1

eTraining

Begins Early July

For Field Service Specialists, Field Managers, Community Program Consultants, Youth Development Center Social Workers

10 to 12 hours covering assessment and case planning

Completed individually as an online course

Content is delivered through Audio, Video, Graphics, Images, Quizzes, Tests

Includes online practice of 1st YASI with case study

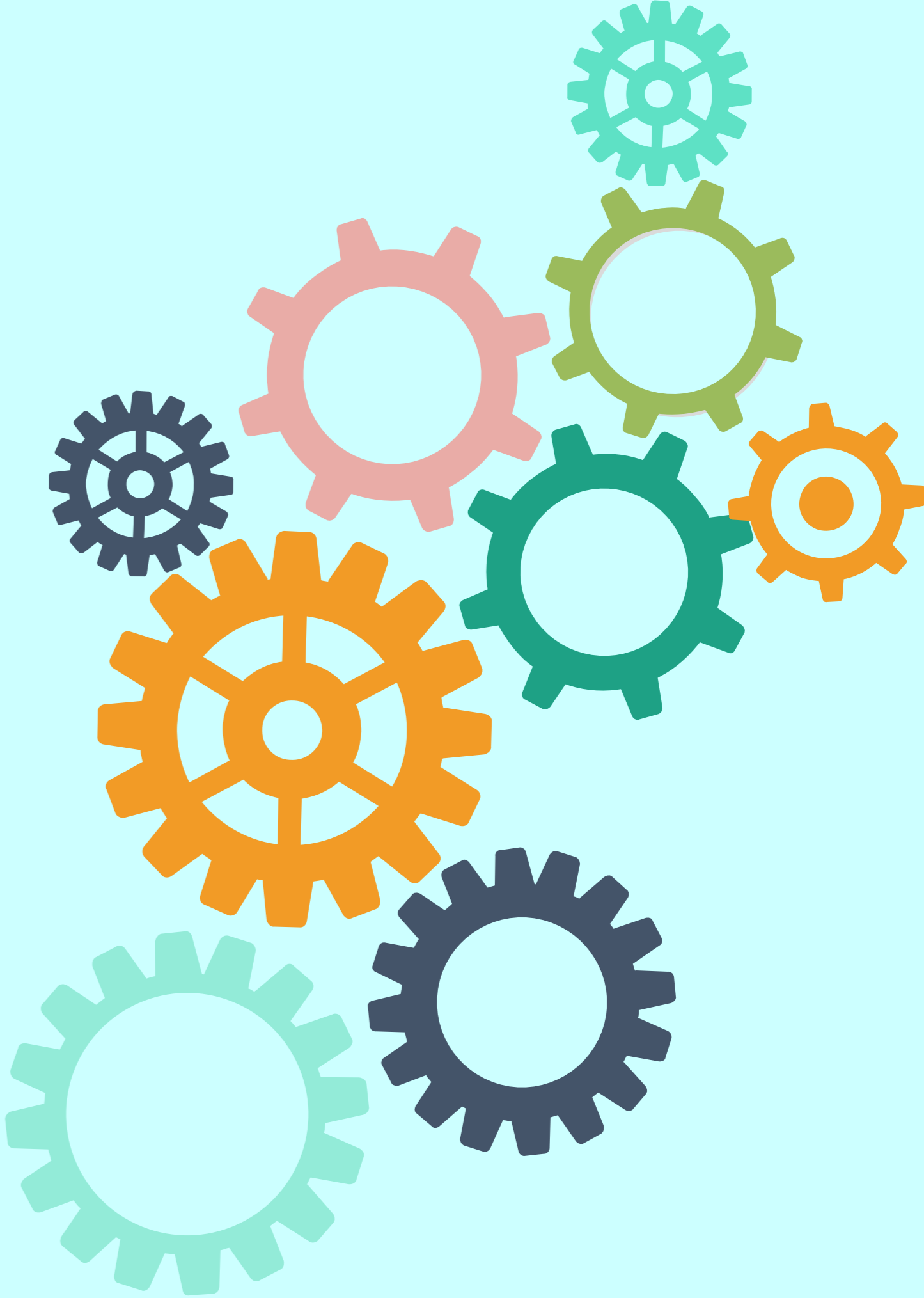
2

Virtual Follow-up Training

Begins Late July

4 two-hour sessions delivered to groups of 10 to 15 participants

Individual assignments and group practice of skills covered in eTraining



Questions



Contact Information

Maxine Evans-Armwood

Director of Court Services

NC Department of Public Safety

Division of Adult Correction and Juvenile Justice

maxine.evans.armwood@ncdps.gov

David Robinson, Ph.D.

Director of Assessment

Orbis Partners

[drobinson@orbispartners.com](mailto:drobins@orbispartners.com)